

“THE ART OF RAISING FREE MEN”



THE FIRST SEED WAS PLACED

At the beginning of the 1990s a group of friends approached biodynamics: the group grew, children were born and with them came the impulse to create a nursery.



AN ASSOCIATION WAS BORN

The Steiner Pedagogical Association of Vallebona, established in 1999, is a **non-profit association of parents and teachers** that operates in the cultural, artistic and pedagogical sectors. The Association is open to anyone who wishes to delve deeper into anthroposophy in all its expressions.

It is made up of a **Board of Directors** that operates in synergy with the **Teachers' and the Parents' Council**.



NURSERY SCHOOL

The connection with the national Waldorf Pedagogical Movement occurs through the **participation of teachers in academic training.**

An agreement with the Municipality of Vallebona allowing the use of the former municipal nursery school, made it possible to start the **Nursery School in 2001**, which also **obtained scholastic equality with Ministerial Decree.**

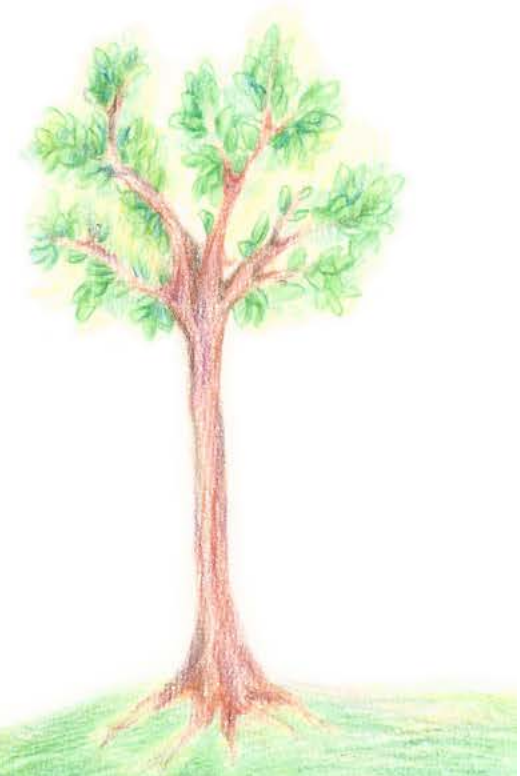


THE SCHOOL PROJECT IN PARENTAL EDUCATION

In **2015** a group of parents started working on the **school project** with the intention of giving continuity to the training program proposed in kindergarten through to primary school.

The project began to materialize in **September 2017**, when the **first children moved from nursery into parental education**.

Today the school has classes from 1st to 8th grade.



THE ASSOCIATION IN THE WALDORF NATIONAL NETWORK

Since 2020 the Association has been part of the International Movement of Steiner-Waldorf Schools.

In Italy there are 61 institutions including nursery, primary and secondary schools, with a total of approximately 3200 students and 450 teachers.



THE AIMS OF WALDORF PEDAGOGY

Teacher



Can I, through my gaze and pedagogical action, accompany and enhance your talents while respecting who you are?

Child

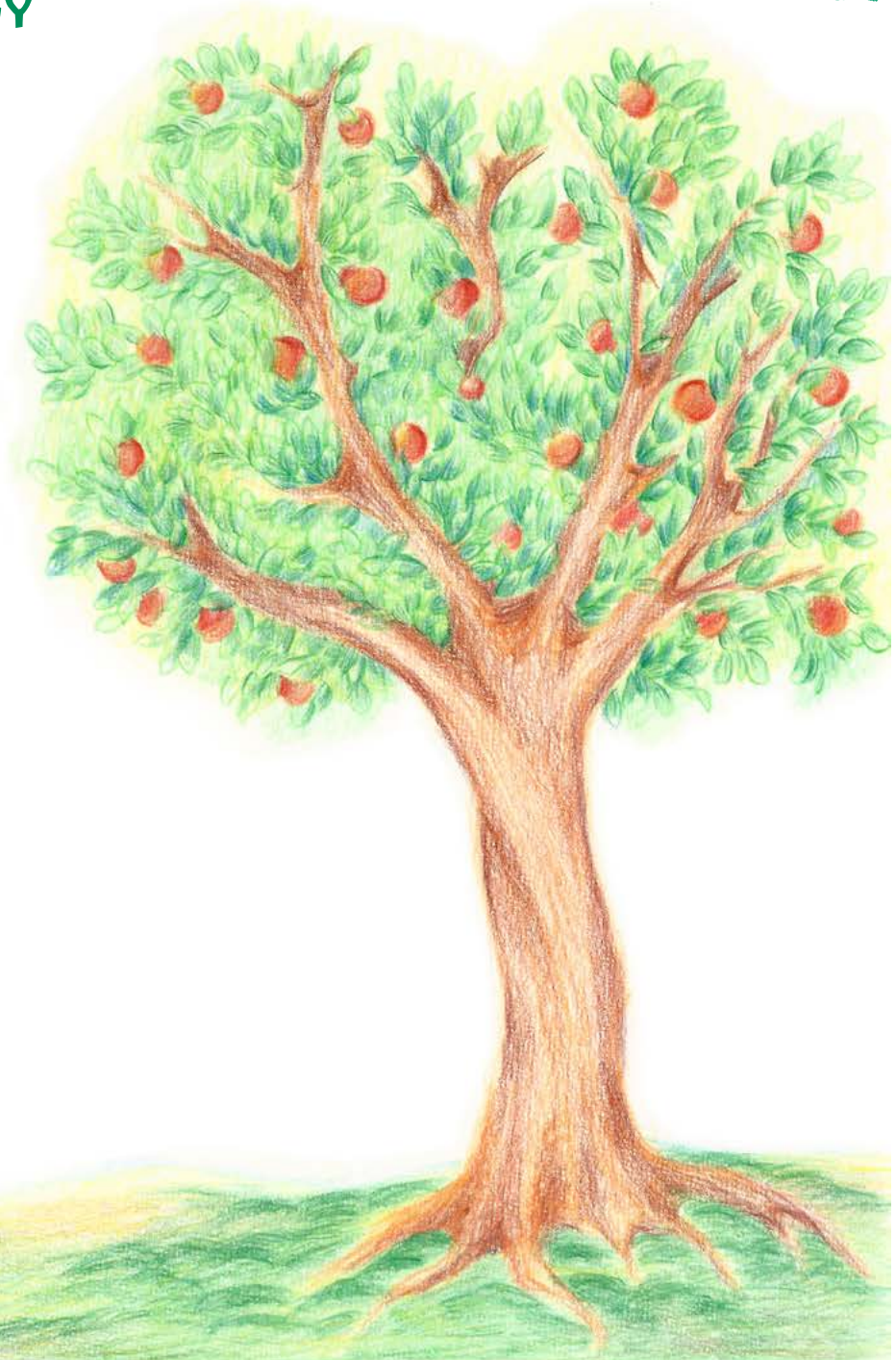


At nursery I play, at school I learn and experiment, in both, together with other children, I create.

Parent

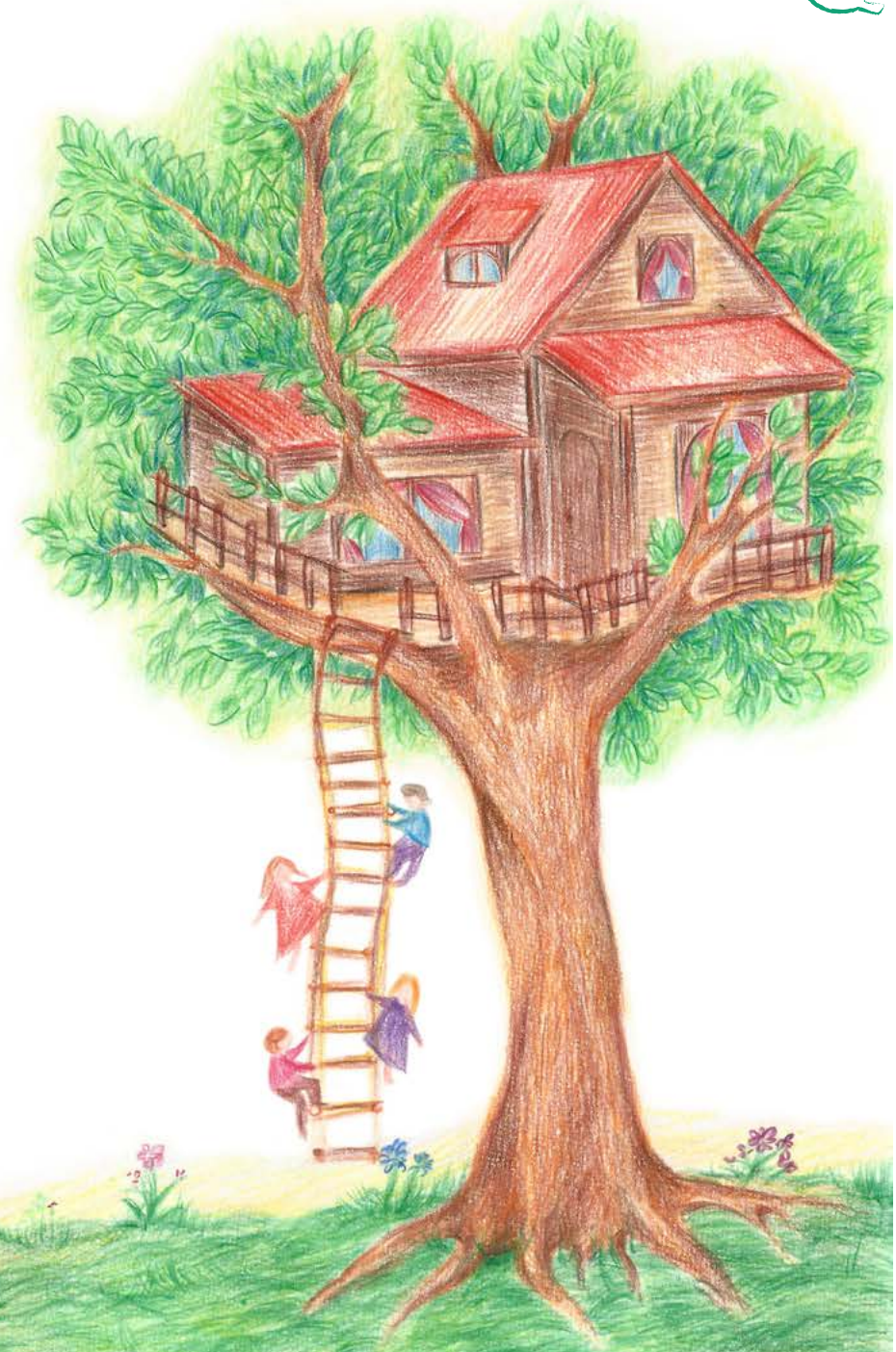


One day, may you cooperate in society with commitment, joy and creativity!



THE TREE HOUSE

The association's current priority is to establish itself in a location that allows continuous growth and participation of the members and which hosts the nursery, elementary and middle school, as well as all the numerous anthroposophical activities.



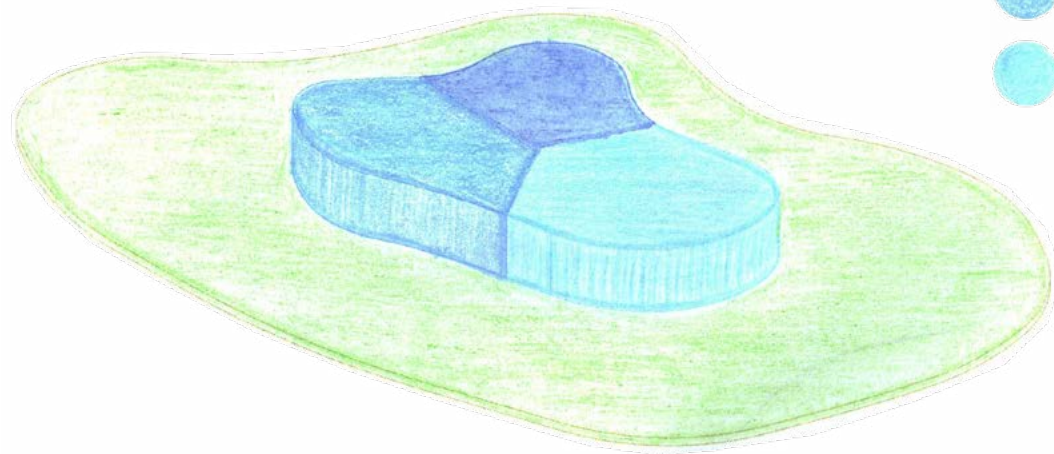
THE NEW HEADQUARTERS: LOCATION

LEGENDA

-  Aurelia state road
-  A10 motorway
-  motorway toll booths
-  main state roads
-  catchment area
-  ideal location area



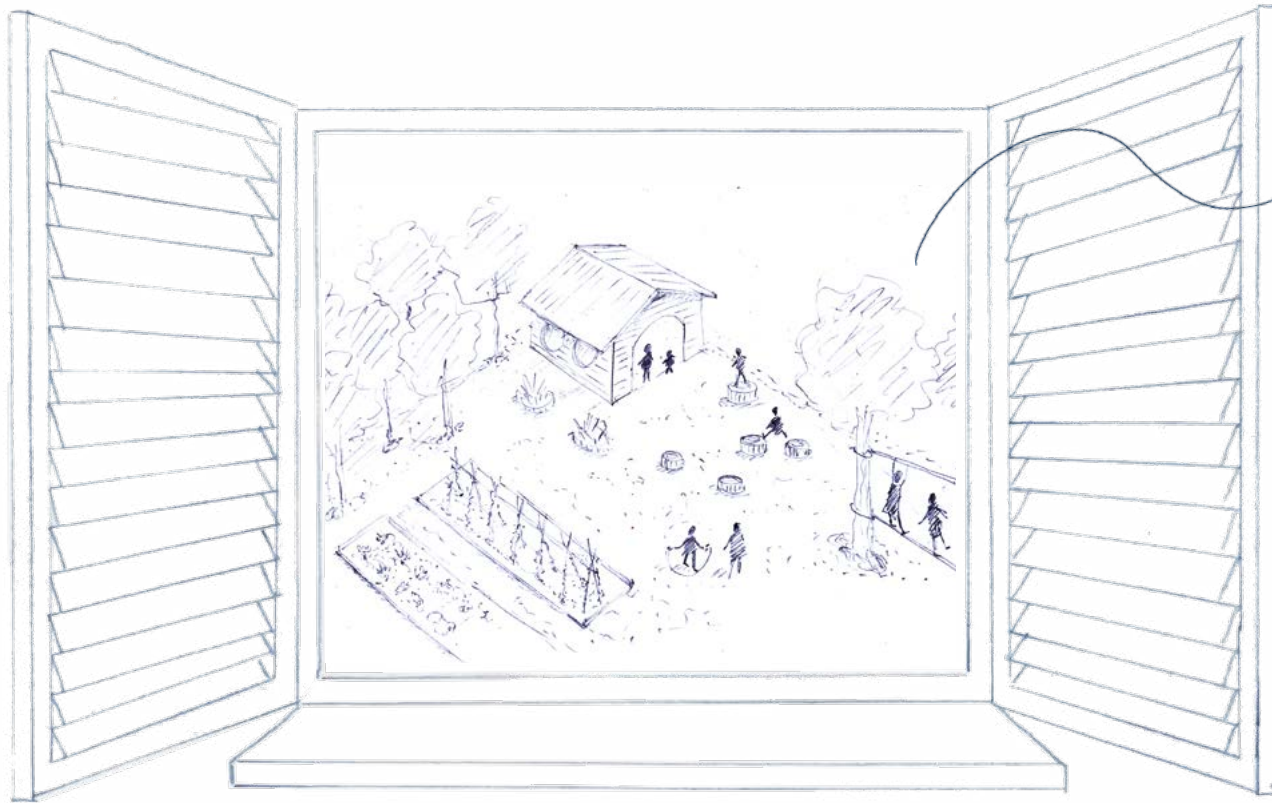
THE NEW HEADQUARTERS: SPACES



- **OUTDOOR SPACES:** minimum 1000 m²
 - **MULTIFUNCTIONAL SPACES:** from 400 to 600 m²
 - **LEARNING SPACES:** from 750 to 900 m²
 - **SERVICE SPACES:** from 550 to 700 m²
- TOTAL INTERNAL SPACES:** from 1700 to 2200 m²



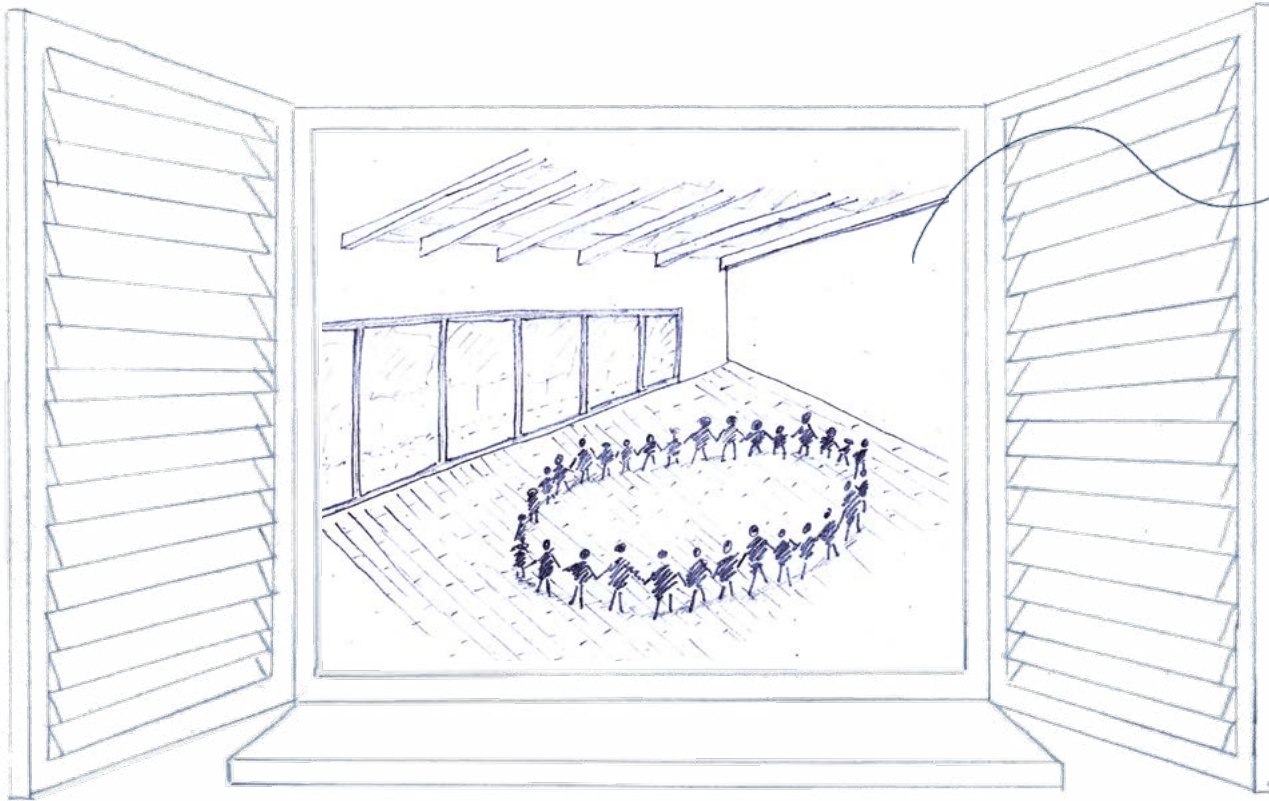
THE NEW HEADQUARTERS: OUTDOOR SPACES



OUTDOOR SPACES
(min 1000 m²)
garden
vegetable garden
orchard
wooden house
paths on logs
sports area



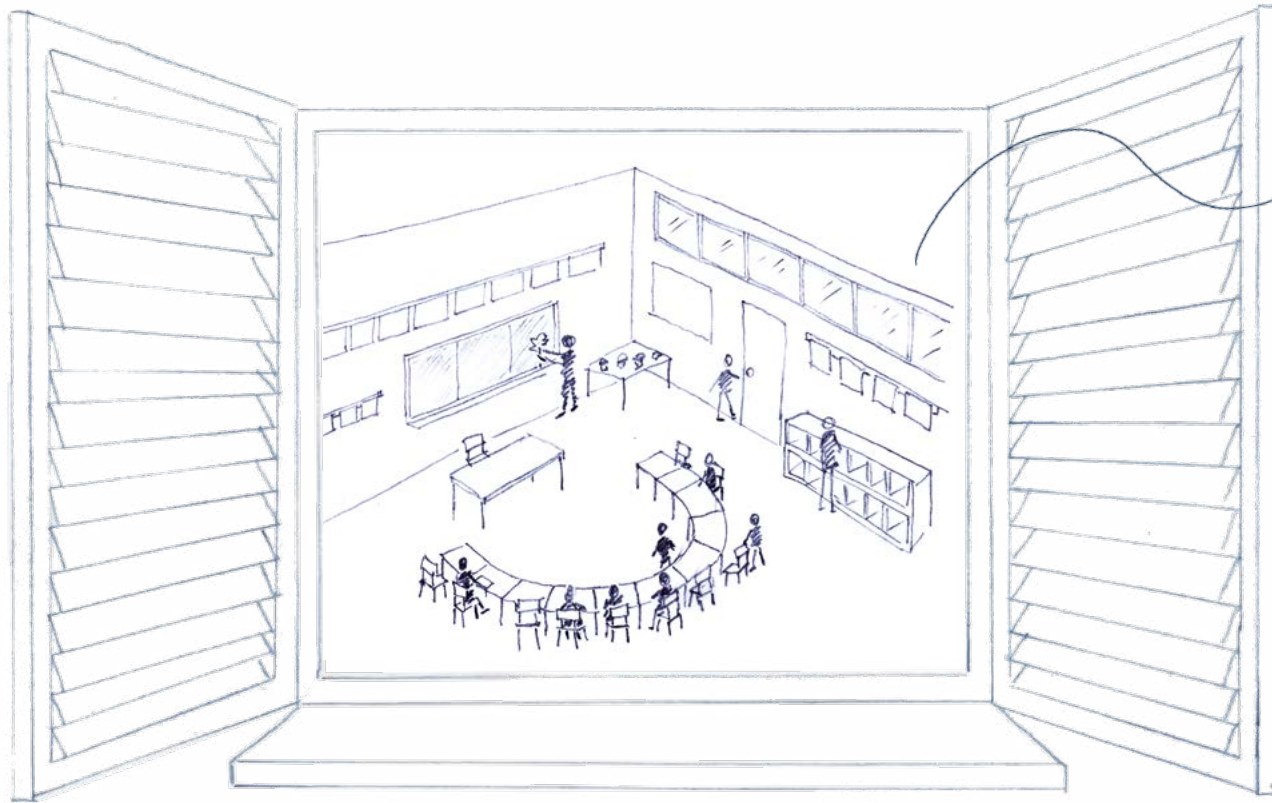
THE NEW HEADQUARTERS: INTERNAL SPACES



MULTIFUNCTIONAL SPACES
(from 400 to 600 m²)
theatre
catering area



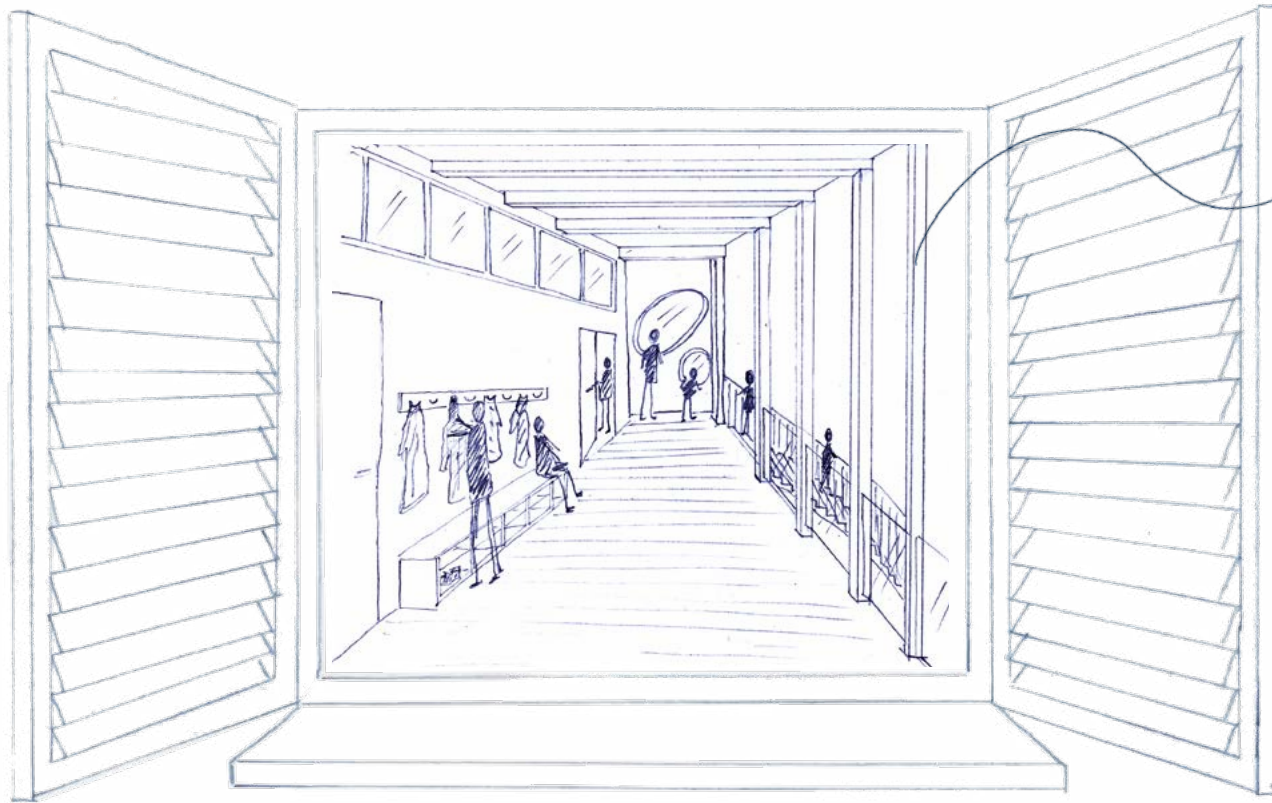
THE NEW HEADQUARTERS: INTERNAL SPACES



LEARNING SPACES
(from 750 to 900 m²)
2 nursery sections
8 school classrooms
laboratories
music room
eurythmy room



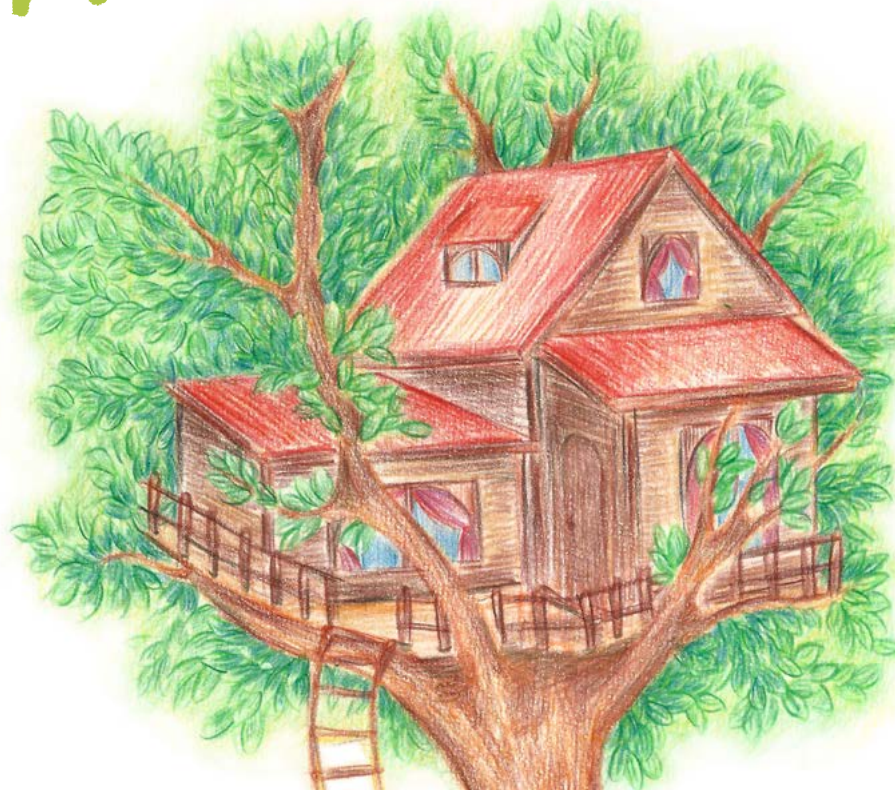
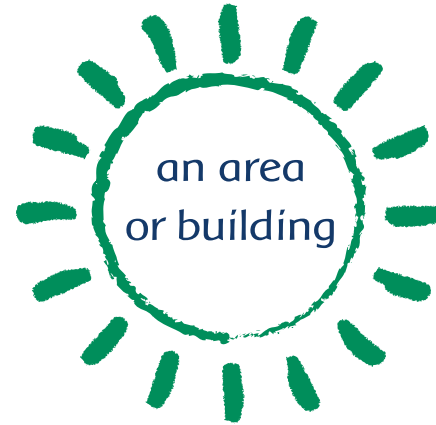
THE NEW HEADQUARTERS: INTERNAL SPACES



- SERVICE SPACES
(from 550 to 700 m²)
 - teacher spaces
 - secretarial and administration
 - toilet
 - connection spaces
 - technical spaces
 - deposits



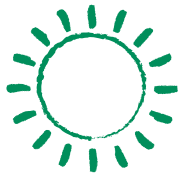
WHAT DO YOU WISH TO DONATE?



HOW YOU CAN SUPPORT US?



as **FINANCING PARTY**,
with an act of economic donation



as a **PUBLIC OR PRIVATE BODY**,
granting an area or building under concession



as a **COMPANY OR ACTIVITY**,
donating materials or services useful for the
creation and management of the project



as a **PARTICIPANT**,
parent, teacher or partner who donates
his time for project management activities



"The future belongs to children if the present welcomes them"



THANK YOU FOR YOUR ATTENTION

ASSOCIAZIONE PEDADOGICA STEINERIANA VALLEBONA

www.associazionesteinerianavallebona.it | waldorfvallebona@libero.it | +39 320 6638802